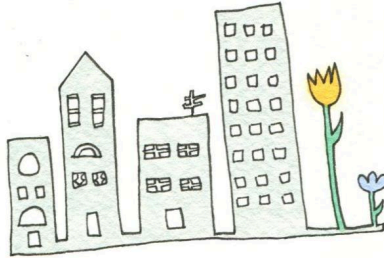
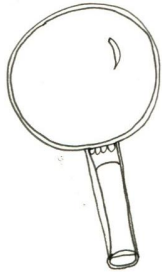


Chelsea Day School



Summer Explorers 2010



A program for children entering 4's and K in the fall

Spend the summer exploring New York City! Twice each week, our campers will visit familiar sites and neighborhoods around the city. Examples of trips include, but are not limited to, Central Park, Chelsea Piers Water Park, SI Ferry and the Central Park Zoo. When back at school, the many voices of the children will then explore the experience through art, construction, poetry, stories and music.

A week with the Summer Explorers will feature activities including cooking, arts, sports and science. Each day will provide a balance of structured as well as free play to ensure that every child has a valuable and rewarding experience. Each group will have a qualified group leader who is supported by several assistants, including high school alumni. We hope you will join us as we embark on our journey of exploration, investigation and expression this summer 2010!

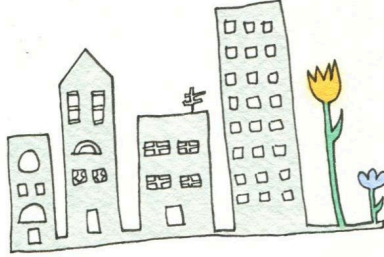
Imagine the possibilities!

Basics:

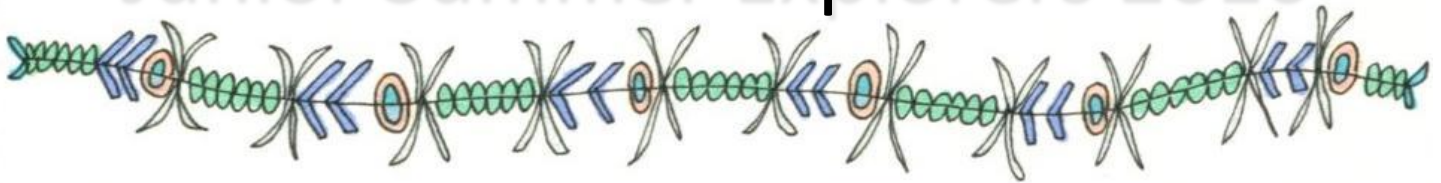
Camp runs from June 21st to July 30th. The program is 5 days a week from 9:00am to 1:00pm. Campers must bring a lunch each day. Snack will be provided. Campers have the option of staying until 3:00pm Mondays – Thursdays. Camp ends at 1:00pm on Fridays. Camp enrollment is on a week-to-week basis. Please complete the sign up form on the following pages to choose your schedule. Full payment is required by May 14th, 2010 to secure your place. Enrollment after May 14th will incur additional fees.

	<u>Fees before May 14th:</u>	<u>Fees After May 14th:</u>
5 Days a week (9am – 1pm)	\$325/week	\$375/week
Added Afternoon (1pm – 3pm)	\$15/afternoon	\$15/afternoon
5 Days Full-time (9am – 3pm)	\$385/week	\$450/week

Chelsea Day School



Junior Summer Explorers 2010



A program for children entering 2's and 3's in the fall

For our younger campers, we offer an exciting summer experience that introduces your child to Chelsea Day School by exploring water, nature (animals and planting), science, art, stories, cooking, materials, light and shadows. Each group will have an experienced group leader who is supported by several assistants, including high school alumni. Each day will be filled with fun and exciting activities to help your child make the most of his/her summer!

Please see below for age-group details



2/3's

This program is offered to children entering Chelsea Day School in the fall 2010 in the 2/3s class. Children attend camp two days a week, either Monday & Wednesday or Tuesday & Thursday from 9:30-11:30 from June 21st to July 30th. The program will follow the routine of the school day with each day having a special activity. We have room in the program for 20 children, and we will enroll on a first-come first-served basis.

Fee: \$960 for the whole session

3's:

This program is offered to children who were enrolled in a 2/3s class during the 2009-2010 school year. Each day will feature a special activity as well as a balance of structured and free play. Camp runs from June 21st to July 30th. The program is 5 days a week from 9:00am to 1:00pm, with a minimum of a 3 days a week required. Campers must bring a lunch each day. Snack will be provided. Camp enrollment is on a week-to-week basis. Please complete the sign up form on the following pages to choose your schedule. Full payment is required by May 14th, 2010 to secure your place. Enrollment after May 14th will incur additional fees.

	<u>Fees before May 14th:</u>	<u>Fees after May 14th:</u>
3 Days a week (9am – 1pm)	\$195/week	\$225/week
Additional Days 9am – 1pm)	\$65/day	\$75/day
5 Days a week (9am – 1pm)	\$325/week	\$375/week



Chelsea Day School Summer Camp 2010 Sign Up



Please complete both pages of this form and return it to the school as soon as possible. You will receive an invoice based on the schedule you choose on the next page of this form.

Payment is expected in full by May 14th, 2010.

Child's Name: _____

Child's Date of Birth: _____

Parents' Names: _____

Home Telephone: _____

Cell Phone: _____

Email: _____

Caregiver & Phone: _____

Emergency Contacts & Phone: _____

Child's Physician & Phone: _____

Medical Information (Allergies or Medical Conditions) _____

If none of the contacts can be reached, I give my permission for my child to be taken to NYU Medical Center, 550 First Avenue @ 33rd Street (or if away from school, to the nearest hospital). I also give my permission for emergency treatment to be administered until a family member or my child's physician is contacted.

Signature of Parent or Guardian

Date



Chelsea Day School Summer Camp 2010 Sign Up



Child's Name _____

Camp Group _____

Schedule:

You may choose any days in any of the weeks. The schedule does not have to be the same every week, nor do you need to sign-up every week.

<u>Week</u>	<u>Monday</u>	<u>Tuesday</u>	<u>Wednesday</u>	<u>Thursday</u>	<u>Friday</u>
1: June 21 - 25					
2: June 28 - July 2					
3: July 5 - 9	NO CAMP				
4: July 12 - 16					
5: July 19 - 23					
6: July 26 - 30					

Please remember that spaces are filled on a first-come, first-served basis. Schedules will be set and staff will be determined based on enrollment. Please do not ask us to make-up days if your child is away or sick. Additional afternoons or days may be added as long as there is room. Please see the office and give at least 24 hours notice to add days or afternoons. If you have any additional questions please call the school or email us at camp@chelseadayschool.org.